

Functional Neuroanatomy in Psychiatry

Andrei Novac, M.D.

Director, Traumatic Stress Program

UCI Medical Center

Outline of Workshop

- A. Relevant Anatomical Structures
- B. Brain Architecture and Neurotransmitters
- C. Circuitry and Neurogenesis
- D. Imaging Techniques and Mental Processes
- E. Dissection Video
- F. Case Scenarios and Exercises

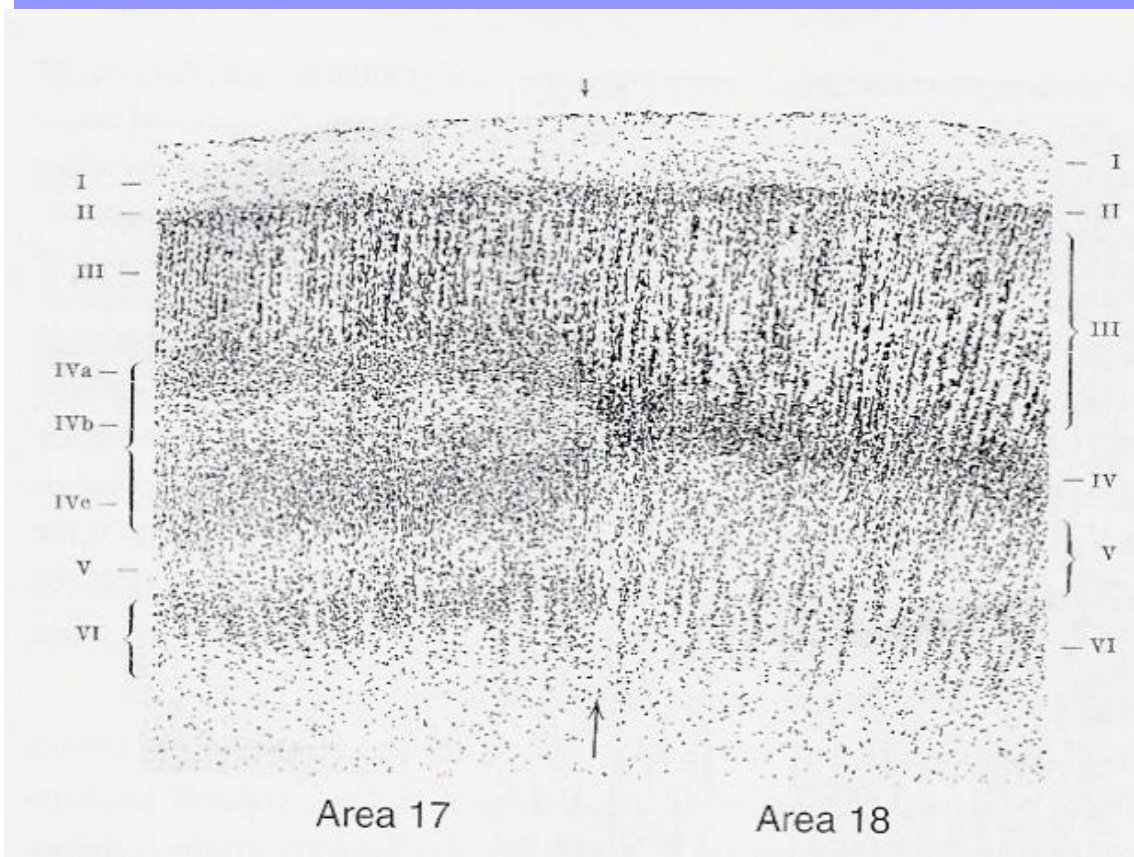
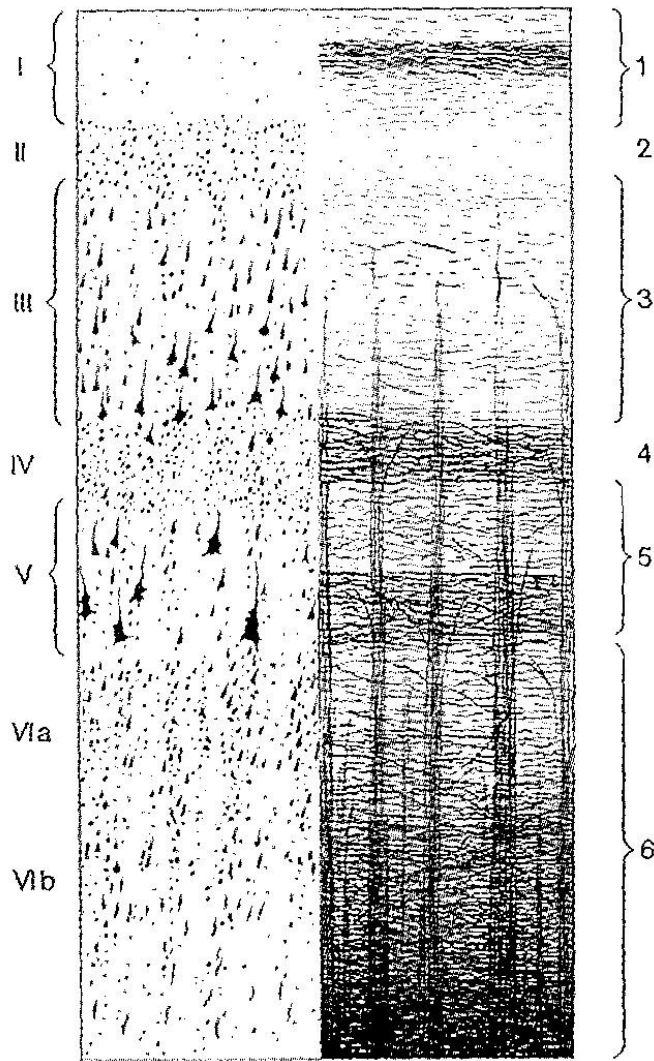


Figure A-22 Isocortex layers.

- I-VI Cell layers
- I-III External principal zone
- IV-VI Internal principal zone
- 1-6 Myelinated layers

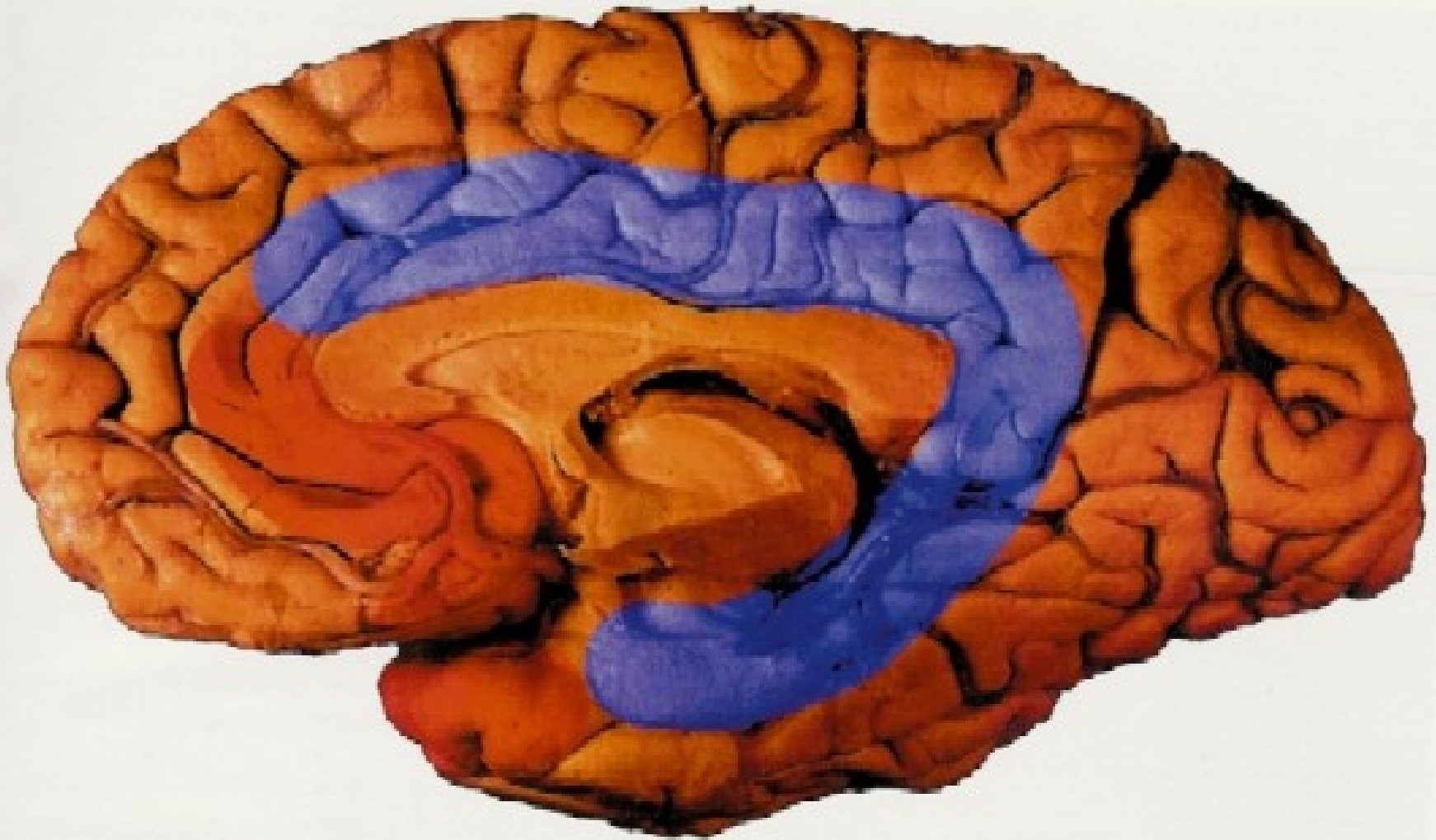
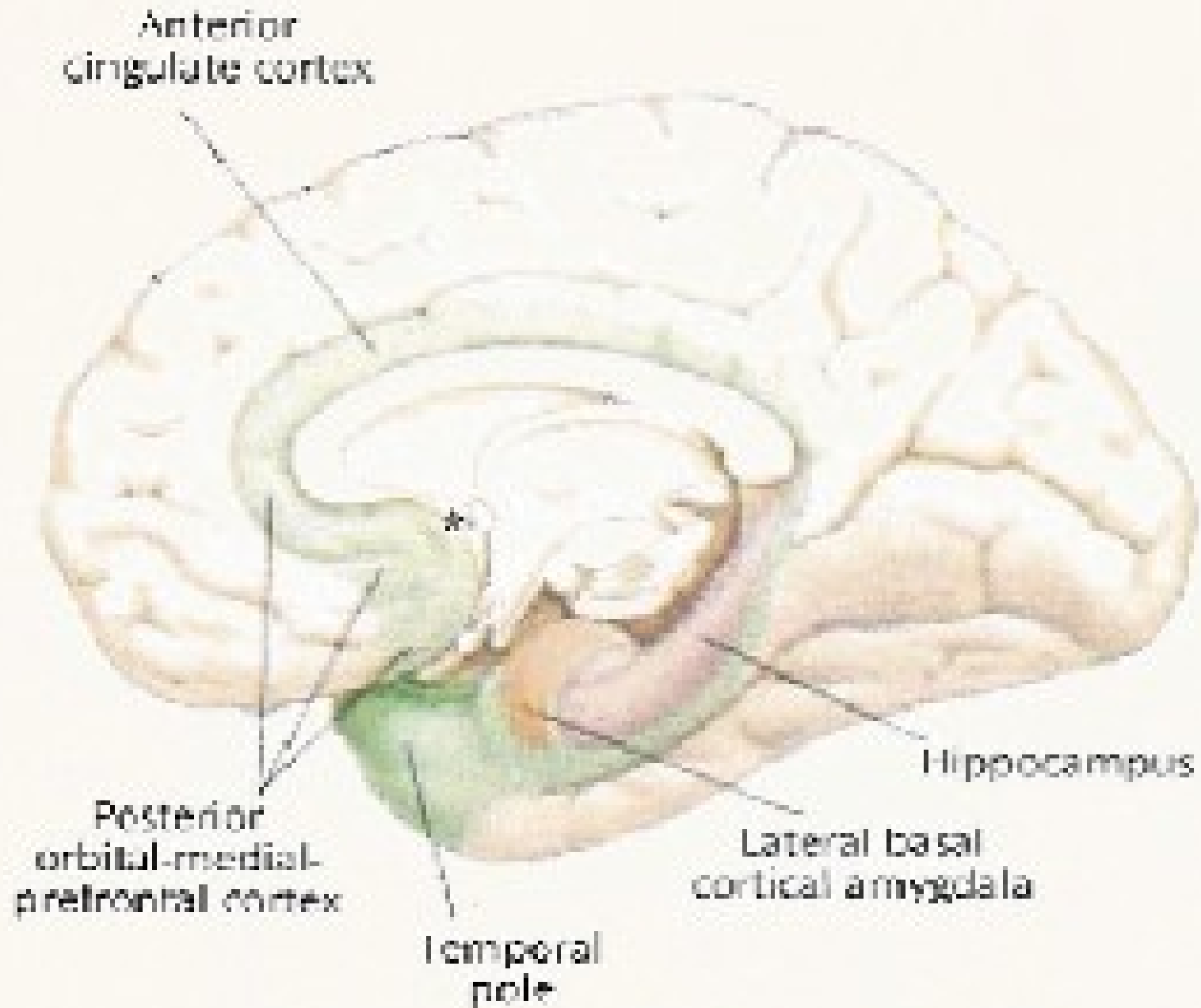


FIGURE 6. The Greater Limbic Lobe of the Human Brain²



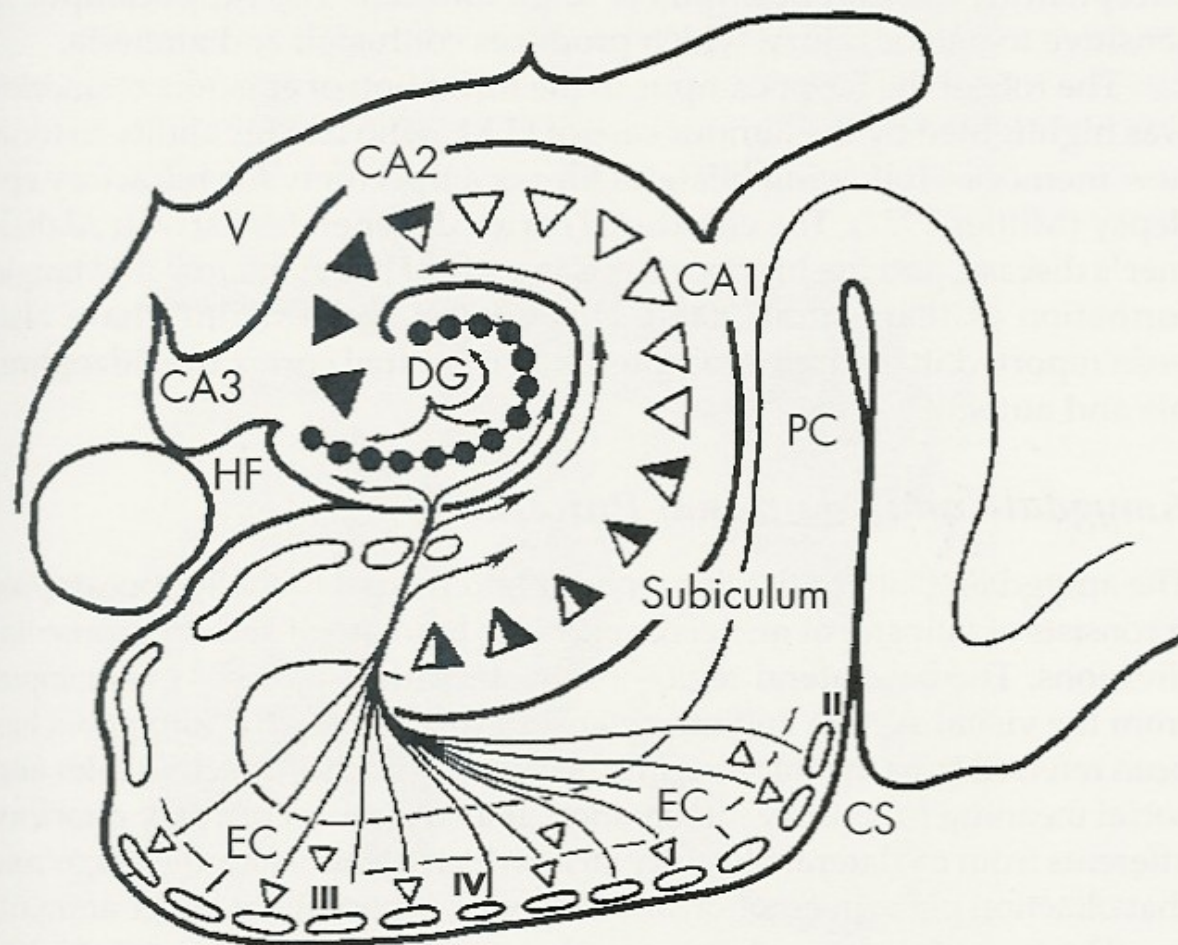


Figure 1–6. Schematic coronal view showing cortical input to the hippocampus and entorhinal cortex. Direct cortical input to the hippocampal pyramidal neurons (CA1–CA3) and dentate gyrus granule cells (DG) is received via the perforant pathway that arises from the entorhinal cortex (EC). HF = hippocampal fissure; V = ventricle; PC = perirhinal cortex; CS = collateral sulcus.

Source. Reprinted from Van Hoesen GW: "Ventromedial Temporal Lobe Anatomy, With Comments on Alzheimer's Disease and Temporal Injury." *Journal of Neuropsychiatry and Clinical Neurosciences* 9:331–341, 1997. Copyright 1997, American Psychiatric Press, Inc. Used with permission.

For additional information regarding
this subject, please contact Dr. Novac
at anovacmd@gmail.com